

# St Patrick's has needs!

**This historic church in the centre of the old town has been here for 250 years as of the 9<sup>th</sup> of October 2024. This is the Parish of "Little Ireland", Hibernian FC, James Connelly, and the Venerable Margaret Sinclair.**

Churches can't live on their history though; they need to be maintained by the present generation. There is a huge burden on us to match the legacy of the past even whilst there is a cost-of-living crisis: the church community is not exempt from these pressures. The rising costs in general across the economy are coupled with the need in the last calendar year to undertake repairs, restoration, and cleaning works that had been stalled for many years.

Since we first arrived in September 2023, we have been pleased to see that the average weekly collection has risen from £300 to £500 per week. We are so grateful for this vote of confidence in what's happening at St Patrick's at current. However, this is still below budget.

**We continue to run an average monthly deficit of £3000 to £4000. If this continues, then our current account will be empty in three months.**

We need to find alternate sources of income and finance, other than the weekly collection plate, which only ever covers the cost of keeping the doors open. You cannot have such a large church, grounds, and house without expecting to keep it all in good condition; it has been a false economy in the past to delay maintenance.

**As of the Canon Hannan Memorial Mass (Saturday 22<sup>nd</sup> June 2024), we have launched a new BUILDING FUND:**

we are appealing for regular financial commitments across the board, even if you're only an occasional visitor, St Patrick's won't be here in the future if everyone "forgets" their wallet, even for just one Sunday! Please use the QR code or the Bank Details when you don't have any cash for the collection plate; and make up for previous Sundays too! For everyone who pays tax, to sign up to "Gift Aid" (please ask for the forms at the piety stall - we recover 25% of your donation from the Tax Office, you don't need to do anything else), but we are also always in need of more physical volunteers to do other things which would prevent us from having to pay for those labour costs (e.g. the perimeter fencing on South Gray's Close needs repainting).

**Some of the recent expenses that quickly mount up are as follows:**

**\*£17,000 on a serious structural repair of the church house roof (historic chimney). There's yet more work to be done on the pointing on the façade underneath.**

**\*£14,500 on a reliable second-hand car for the parish, and to undertake transport for our service to the Edinburgh Royal Infirmary and Sick Children's Hospital. There was no car when we arrived in September 2023.**

**\*£10,000 on the urgent tree lopping which was necessary to safeguard our own buildings and those of our neighbours. This work is highly specialised, requires costly insurance coverage, and must meet rigorous professional standards.**

**\*£1015 for the annual service of both the church and house heating system.**

**\*£1000 every quarter for the candles, and everything else required of the sacred liturgy; all those things we take for granted in our worship.**

**\*£600+ on average every month for gardening, landscaping and pest control services. It's a large site, and we already receive a heavily discounted rate, plus extra labour. The recent pigeon problem has been solved, but the bell tower has to be cleaned of dead pigeons, re-netted, and now an unexpected moth infestation in the same tower**

**must be exterminated. We don't know how much this will cost, but it's an imperative this work is undertaken for health and safety reasons.**

**\* Roof inspections indicate that all the guttering must be cleaned, and many of the pipe connections will require significant repair; further investigation will confirm the work needed on the slates, as well as the peeling plaster which can be seen by everyone on the church ceiling. The estimates will require careful planning to budget for. The large front doors on the south side of the church require repair and repainting too.**

**\* The church house underwent major renovation over twenty years ago when the first Redemptorists arrived, but this is a long time ago, and parts of the house are significantly tired or marked by damage from previous water ingress; there's still a leak in the sitting room when the rain is heavy, and we continue to have major window problems (crumbling sandstone, rotting rails, broken sashes, many painted shut).**

**\* The planned restoration of the brass work in the sanctuary (the "big six" and the two hanging lamps) and a specially commissioned Parish Film was intended for the 250<sup>th</sup> anniversary celebrations: the £8000 for these projects is at current unattainable.**

**\* We ask for donours for the new Lectionaries (the books that contain the Mass Readings), which become mandatory for use in all parishes in Scotland from Advent. Donour Bookplates come with these new editions for your names to be inscribed:**

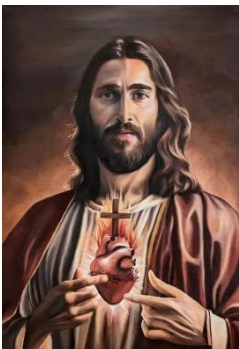
**£695 "Ambo Edition" 4 Volume Set (£173.75 donation per volume)**

**£395 "Chapel Edition" 4 Volume Set (£98.75 donation per volume)**

**£395 "Processional Edition" Book of the Gospels (one single copy)**

**Needing good ideas, experts in finance & volunteers to start & then direct these future activities with two planning meetings in the Memorial Hall:**

**Friday 28<sup>th</sup> of June after the 5.45pm Mass (6.30pm start)  
and again Friday 5<sup>th</sup> of July after the 5.45pm Mass (6.30pm start).**



**These two extra Friday Masses are part of the spiritual contribution to our endeavour, appealing to the Sacred Heart of Jesus for consolation & confidence, but we need our own hearts to meet & fight for the future.**

**We require people who can advise on fundraising activities, or those who might know how to seek funds from trusts which exist to help maintain churches, organs, community buildings, or know commercial interests that would advise us on how to become more financially stable etc. Experts, come! Remember, we are looking to cover a monthly shortfall of £4000, so a single sponsored walk or church tombolo isn't going to be the only way forward (as good as those events may be for the community).**

**To begin with we are looking to raise £25,000 ASAP: for 250 people to give £100 each (in an envelope, donating online, or via the bank) labelling the donation "**BIG BUILDING FUND**" for our long-term projects.**

**We are also hoping for a quick boost of 1000 people to donate £20 each NOW, for the "**WEE BUILDING FUND**" raising £20,000 to cover costs this Summer.**

***Thank you for your contributions, past, present and future!***

***We are asking you to pray for the success of this campaign: may the Infant of Prague, Our Lady of Perpetual Succour, St Joseph, St Patrick & St Philip Neri help us to achieve what is necessary.  
God bless, the Fathers.***



St Patrick's  
Bank of Scotland  
Sort Code: 80-02-29  
Account Number: 00687306